



EASTMAIN

NEWS RELEASE

Eau Claire gold deposit extended to 880-metre depth D Vein expanded

Trading Symbol: ER - The Toronto Stock Exchange

August 24, 2006

Eastmain Resources Inc. (TSX:ER) announces that results from drilling of the depth extension of the Eau Claire gold deposit are favourable. Preliminary calculations indicate that the 2006 program has increased the gold resource at Eau Claire. Gold-bearing, quartz-tourmaline veins in hole ER06-56 assayed 8.64 g/t Au over a 3.0-metre length at a vertical depth of 880 metres. This intercept includes an interval averaging 15.85 g/t Au across 1.5 metres and 0.5 metres containing visible gold, assaying 42.0 g/t Au. This drill intercept also extends the D Vein group 250 metres down-dip of ER04-44, which intersected three parallel high-grade veins ranging from 11.9 to 20.4 g/t Au across intervals of 1.4 to 1.6 metres. Drill hole ER06-52 intersected 7.32 g/t Au across 2.6 metres and includes a 0.6-metre length of 19.65 g/t Au. This zone lies within the D Vein group 115 metres up-dip of hole 44. Drill holes ER06-54 and ER06-55 also intersected gold-bearing D group veins which range from 4.47 to 8.37 g/t Au over 1.5 metres. These vein intercepts occur below ER04-38, which averaged 13.7 g/t Au over 5.0 metres. ER06-57 intersected 5.10 g/t Au over 1.5 metres, including 11.05 g/t Au across 0.5 metres in the G Vein. Low gold grades were returned from holes ER06-53, 58 and 59. The Eau Claire gold deposit is open at depth.

Four of eight drill holes from the 2006 program intersected gold-bearing, quartz-tourmaline veins within the D group, which is the largest and most significant group of veins with respect to gold resources at Eau Claire. Approximately 25% of the total gold resources from Eau Claire are contained within the D Vein group. 2006 drilling significantly expands the D Vein resource.

Gold grades from hole 56, the deepest intercept in the deposit are remarkably similar to the surface grades from the 450 West Zone (P, JQ and R Veins), where the company plans to extract a 10,000-tonne bulk sample. Deep drilling has demonstrated that the Eau Claire deposit is a major gold-bearing structure with the potential to exceed a million-ounce gold resource.

Eastmain's current objectives at Eau Claire are to extract a bulk sample from the 450 West Zone to determine the mining, milling and metallurgical characteristics of the gold deposit, and to find a second deposit on the property. Permit applications for the bulk sample have gone through a first reading with the Ministry of the Environment in Québec. Key issues are being addressed. Trenching and channel sampling are in progress at the Serendipity and Vana prospects, located 15 to 20 kilometres east of Eau Claire. Previous channel sampling of a sulphide-bearing sediment at Serendipity assayed up to 1.4 g/t Au across 16 metres. Assays of up to 7.70 g/t gold were also obtained from within this sedimentary horizon.

This press release was prepared by Dr. Donald J. Robinson, P. Geo., the company's Qualified Person as defined by NI 43-101. Current field work is being conducted under the supervision of Dr. Vincent Jourdain, P. Eng. and Qualified Person for Eastmain.

Eastmain is a Canadian exploration company holding several early- to advanced-stage gold and base metal projects in Canada. Eastmain's project portfolio includes twelve properties in the Eastmain/Opinaca gold camp, which hosts Goldcorp's Éléonore Project.

Table of Significant Drill Intersections – Eau Claire Gold Deposit

Drill Hole	Line	Station	From	To metres	Length	Au g/t	Comments
ER06-52	200E	725S	509	511.6	2.6	7.32	D Vein group 140 m down dip of ER03-21 115 m up dip of ER04-44
				incl.	1.5	10.17	
				incl.	0.6	19.65	
ER06-53	300E	725S	no significant assays				
ER06-54	250E	850S	640.3	641.8	1.5	4.47	D Vein group 290 m down dip of ER04-38
ER06-55	250E	850S	703.6	704.1	0.5	12.40	D Vein group 240 m down dip of ER04-54 530 m down dip of ER04-38 880 m vertical depth & open
			826.9	828.4	1.5	8.37	
				incl.	0.5	24.40	
ER06-56	200E	850S	785.5	788.5	3.0	8.64	D Vein group 250 m down dip of ER04-44 850 m vertical depth & open
				incl.	1.5	15.85	
				incl.	0.5	42.00	
ER06-57	100E	800S	445.5	447	1.5	5.10	G Vein group Drilled up-dip of ER04-50 D Vein group
				incl.	0.5	11.05	
			601.3	601.8	0.5	7.43	
ER06-58	005E	790S	no significant assays				Drilled to test up-dip of ER04-45 D Vein group
ER06-59	520W	750S	no significant assays				Drilled to test lateral extension of ER03-29

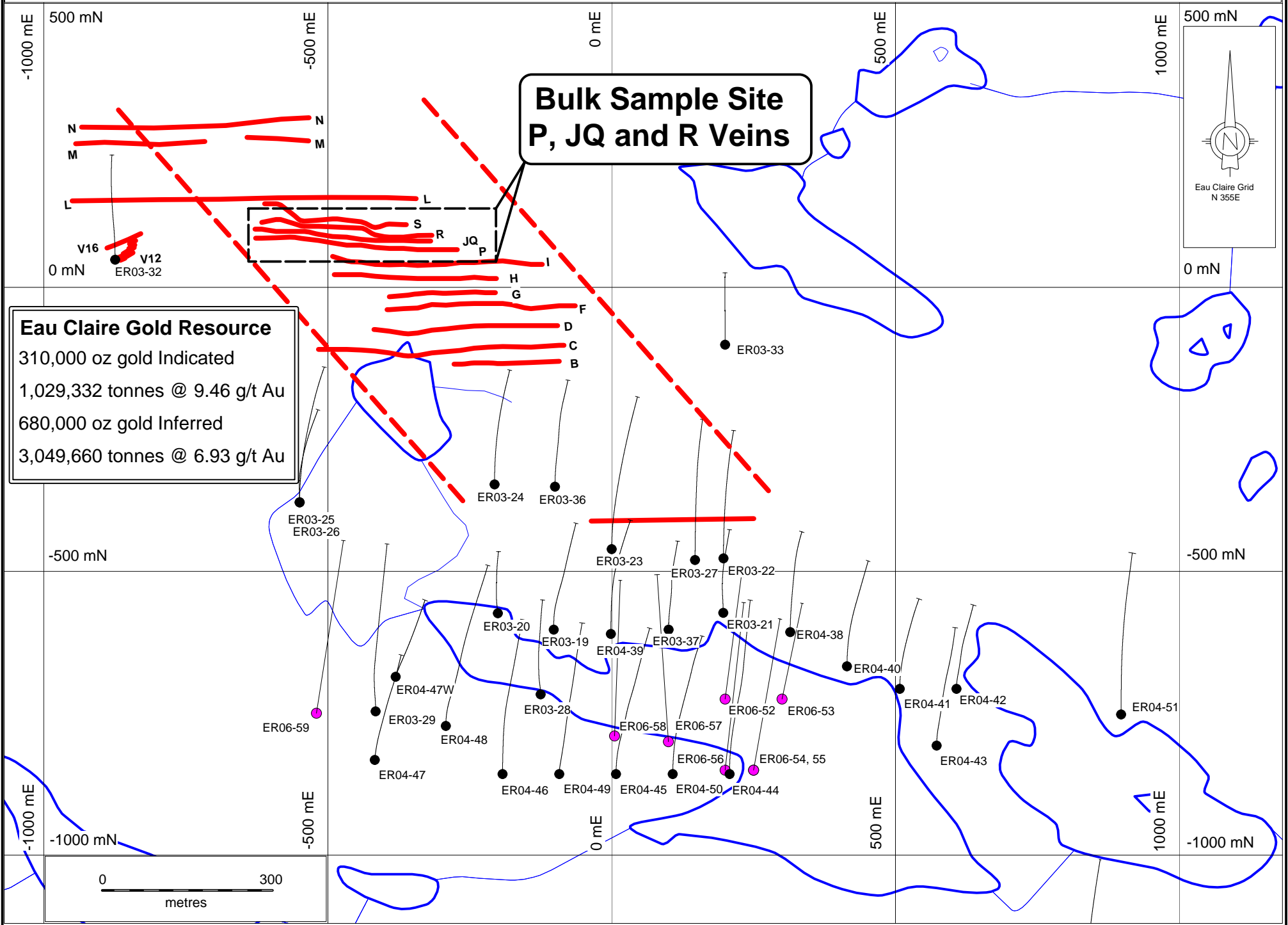
-30-

Drill core samples were analyzed by fire assay methods at ALS Chemex Laboratories. Intervals quoted are core lengths and not necessarily "true widths".

For further information please contact Eastmain Resources Inc.: Donald J. Robinson, Ph.D., P.Geo., President or Catherine Butella, Exploration Manager at (519) 940-4870, fax (519) 940-4871, by e-mail: robinson@eastmain.com or visit our website at www.eastmain.com.

The statements made in this Press Release may contain forward-looking statements that may involve a number of risks. Actual events or results could differ materially from the Company's expectations and projections.

Clearwater Project - 2006 Eau Claire Gold Deposit Drill Plan



**Bulk Sample Site
P, JQ and R Veins**

Eau Claire Gold Resource
 310,000 oz gold Indicated
 1,029,332 tonnes @ 9.46 g/t Au
 680,000 oz gold Inferred
 3,049,660 tonnes @ 6.93 g/t Au

